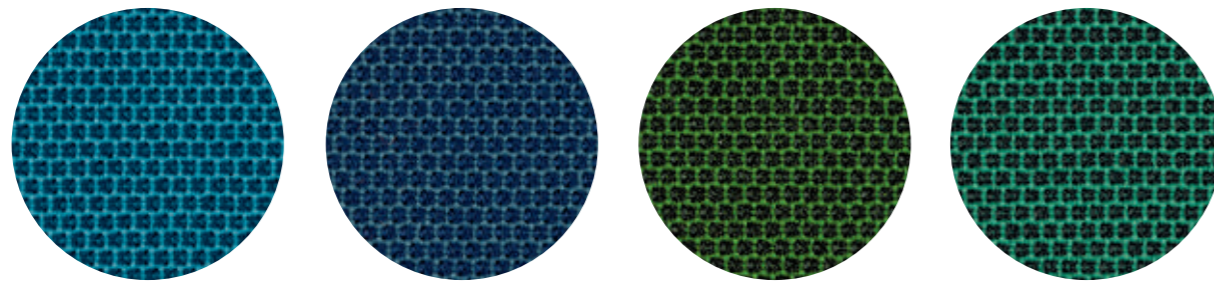


C 101

C 86

C 85

C 89

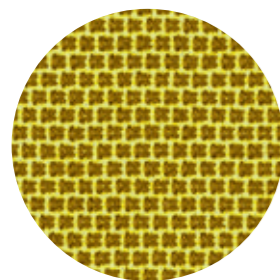


C 83

C 100

C 84

C 88



C 87

technical specifications / specifiche tecniche

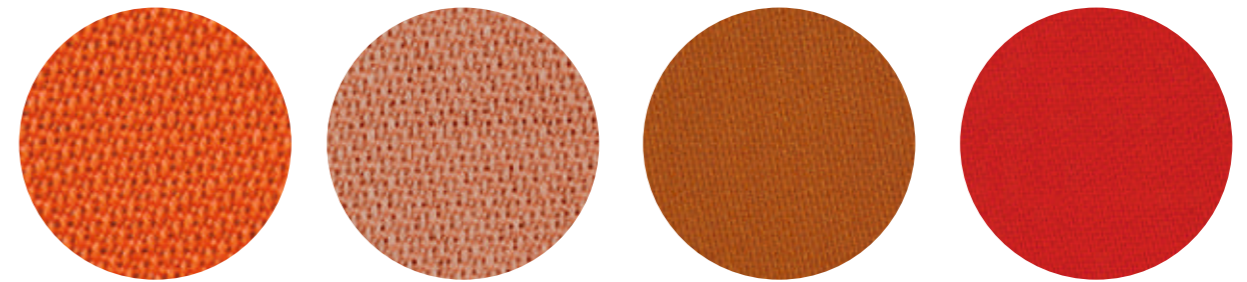


- COMPOSITION / COMPOSIZIONE
54% New Zealand Wool
44% Post-consumer recycled, polyester
2% Polyamide
- ABRASION / ABRASIONE
100.000 cycles, Martindale
(EN ISO 12947-2)

- RUBBING FASTNESS / SOLIDITÀ ALLO SFREGAMENTO
Dry and Wet 4-5, scale 1-5
(EN ISO 105-X12:1995)
- PILLING
4-5, scale 1-5 (EN ISO 12945-2)
- LIGHT FASTNESS / SOLIDITÀ ALLA LUCE
5-7, scale 1-8 (EN ISO 105-B02)

- FLAME RESISTANCE
RESISTENZA AL FUOCO
BS EN 1021 1&2
BS EN 1021-1
ÖNORM A3800-1
US CA TB 117-2013

- APPROVED / OMOLOGATO

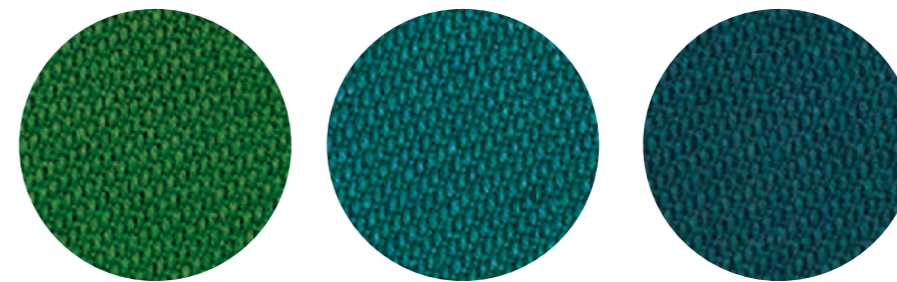


C 110

C 111

C 112

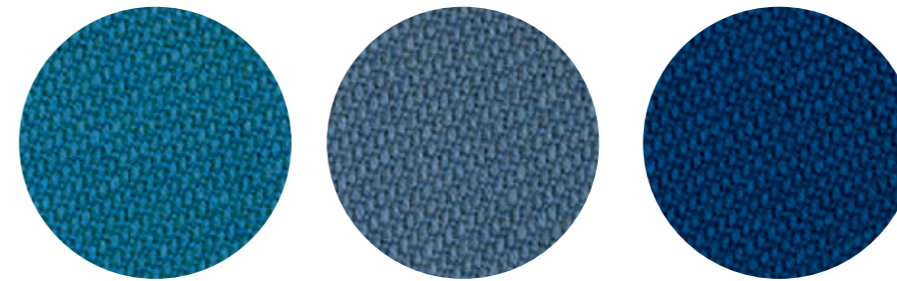
C 113



C 117

C 118

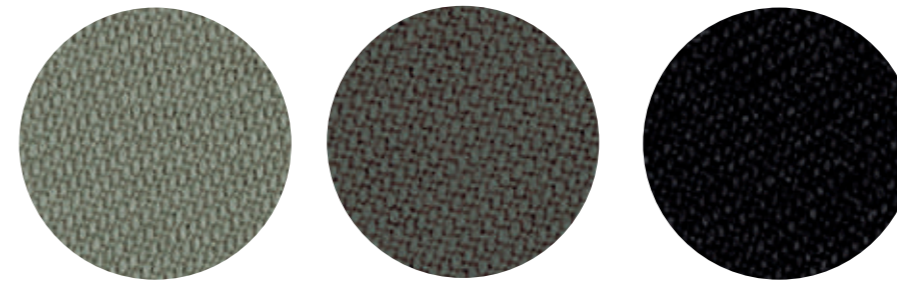
C 119



C 120

C 121

C 122



C 114

C 115

C 116

technical specifications / specifiche tecniche

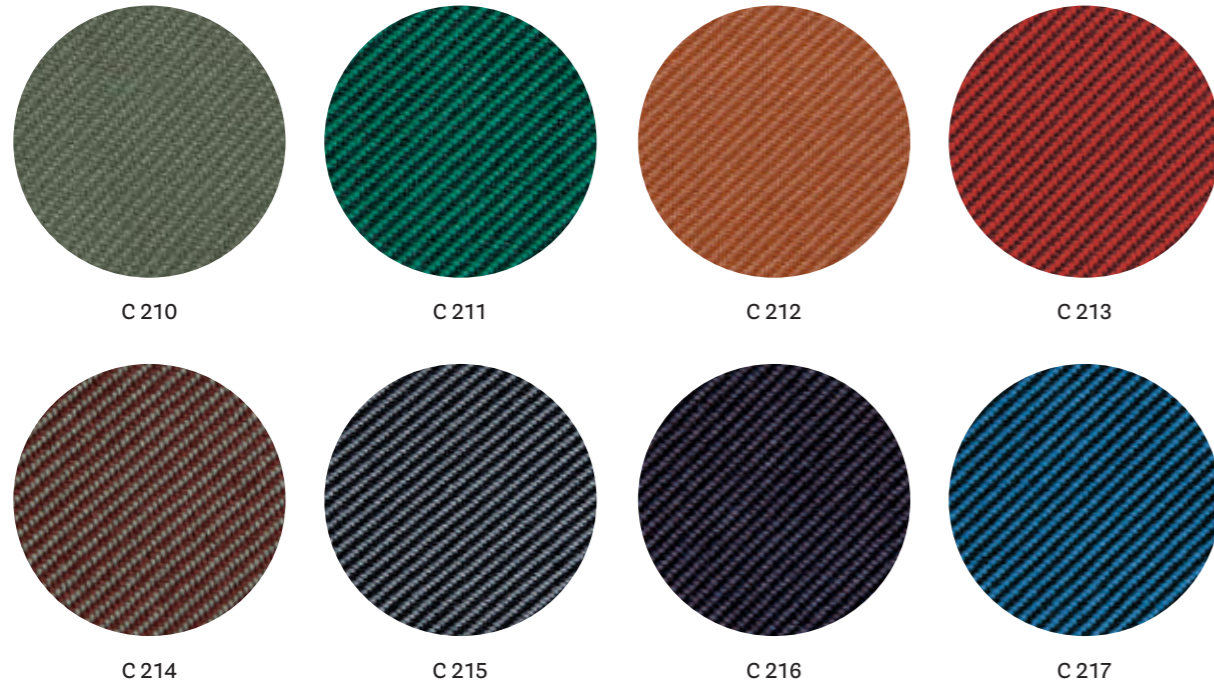
- APPROVED / OMOLOGATO



- COLLECTION / COLLEZIONE
svensson-SEMI
- COMPOSITION / COMPOSIZIONE
85% Wool, 15% Polyamide
- ABRASION / ABRASIONE
100.000 cycles,
Martindale
(EN ISO 12947-2)
- RUBBING FASTNESS
SOLIDITÀ ALLO SFREGAMENTO
Dry 4 and Wet 3-4, scale 1-5
(EN ISO 105-X12)
- LIGHT FASTNESS
SOLIDITÀ ALLA LUCE
5-7, scale 1-8
(EN ISO 105-B02)
- FLAME RESISTANCE / RESISTENZA AL FUOCO
BS 5852 Crib 5
EN ISO 1021 Part 1&2
IMO FTP Code 2010: Part 8
UNI 9175 Classe 1 IM
US CA TB 117-2013



CATEGORY C / CATEGORIA C



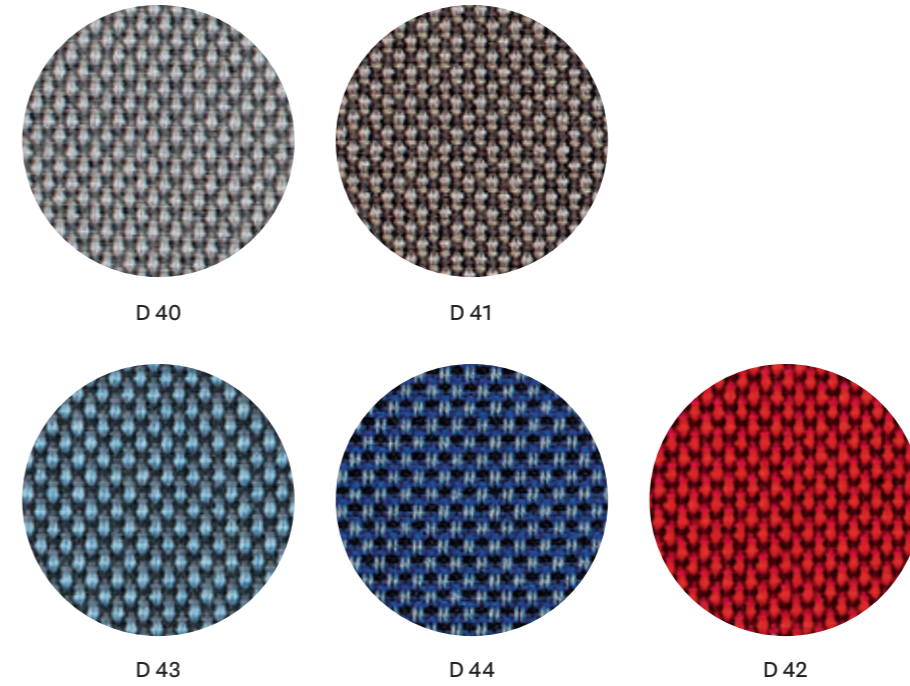
technical specifications / specifiche tecniche



- COLLECTION / COLLEZIONE
kvadrat - RELATE
DESIGNER Patricia Urquiola
- COMPOSITION / COMPOSIZIONE
100% TREVIRA CS®
- ABRASION / ABRASIONE
80.000 cycles, Martindale
(EN ISO 12947)
- APPROVED / OMOLOGATO
- RUBBING FASTNESS / SOLIDITÀ ALLO SFREGAMENTO
Dry and Wet 4-5, scale 1-5
(EN ISO 105-X12)
- PILLING
4-5, scale 1-5 (EN ISO 12945)
- LIGHT FASTNESS / SOLIDITÀ ALLA LUCE
5-7, scale 1-8 (EN ISO 105-B02)
- SOUND ABSORPTION / ASSORBIMENTO ACUSTICO
folded: $\alpha_w=0.50$ Class D (EN ISO 354)
- FLAME RESISTANCE / RESISTENZA AL FUOCO
AS/NZS 3837, class 2
BS 5852 Crib 5
BS 5852 Part 1 with treatment
DIN 4102 B1
EN 1021-1/2
IMO FTP Code 2010: Part 8
NF D60-013
NF P92 507 M1
NFPA 701
ÖNORM B1/Q1
SN 198 898 5.2
UNI 9177 Classe 1
US CA TB 117-2013



CATEGORY D / CATEGORIA D

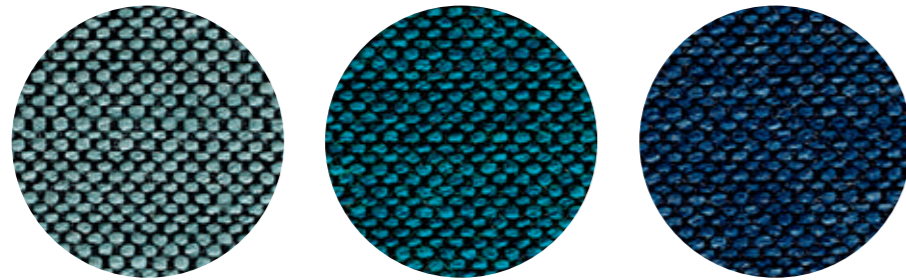


technical specifications / specifiche tecniche



- COMPOSITION / COMPOSIZIONE
88% New Zealand Wool
12% Polyamide
- ABRASION / ABRASIONE
100.000 cycles, Martindale
(EN ISO 12947-2)
- APPROVED / OMOLOGATO
- RUBBING FASTNESS / SOLIDITÀ ALLO SFREGAMENTO
Dry and Wet 4-5, scale 1-5
(EN ISO 105-X12)
- PILLING
4-5, scale 1-5 (EN ISO 12945-2)
- LIGHT FASTNESS / SOLIDITÀ ALLA LUCE
5-7, scale 1-8 (EN ISO 105-B02)
- FLAME RESISTANCE / RESISTENZA AL FUOCO
BS EN 1021 1&2
BS 5852 Part 1 0, 1
UNI 9175 Classe 1 IM
US CA TB 117-2013

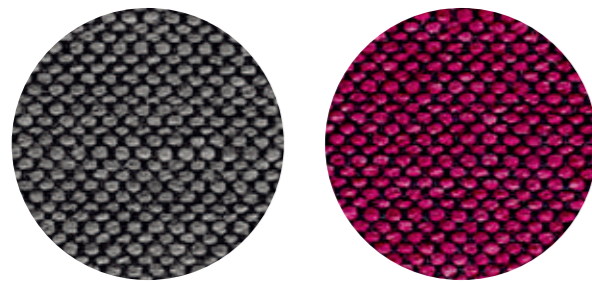




G 154

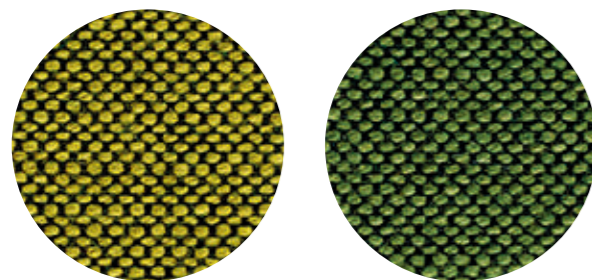
G 155

G 156



G 151

G 150



G 152

G 153

technical specifications / specifiche tecniche

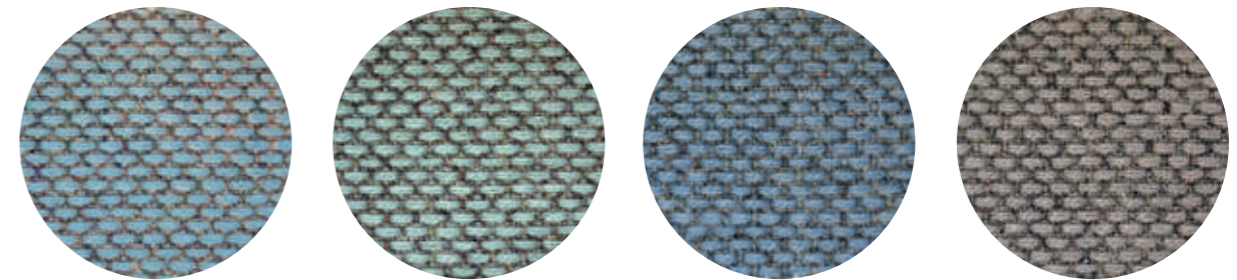


- COLLECTION / COLLEZIONE
svensson - BALANCE
- COMPOSITION / COMPOSIZIONE
82% Wool
12% Rami
6% Polyamide

- ABRASION / ABRASIONE
100.000 cycles, Martindale (EN ISO 12947-2)
- RUBBING FASTNESS / SOLIDITÀ ALLO SFREGAMENTO
Dry 4 and Wet 3-4, scale 1-5 (EN ISO 105-X12)
- LIGHT FASTNESS / SOLIDITÀ ALLA LUCE
5-7, scale 1-8 (EN ISO 105-B02)

- FLAME RESISTANCE / RESISTENZA AL FUOCO
BS 5852 Crib 5
EN ISO 1021 Part 1&2
IMO FTP Code 2010: Part 8
UNI 9175 Classe 1 IM
US CA TB 117-2013

- APPROVED / OMOLOGATO

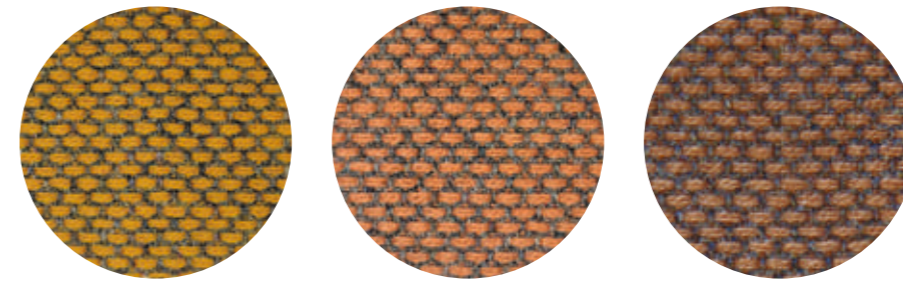


G 143

G 145

G 144

G 146



G 140

G 141

G 142

technical specifications / specifiche tecniche



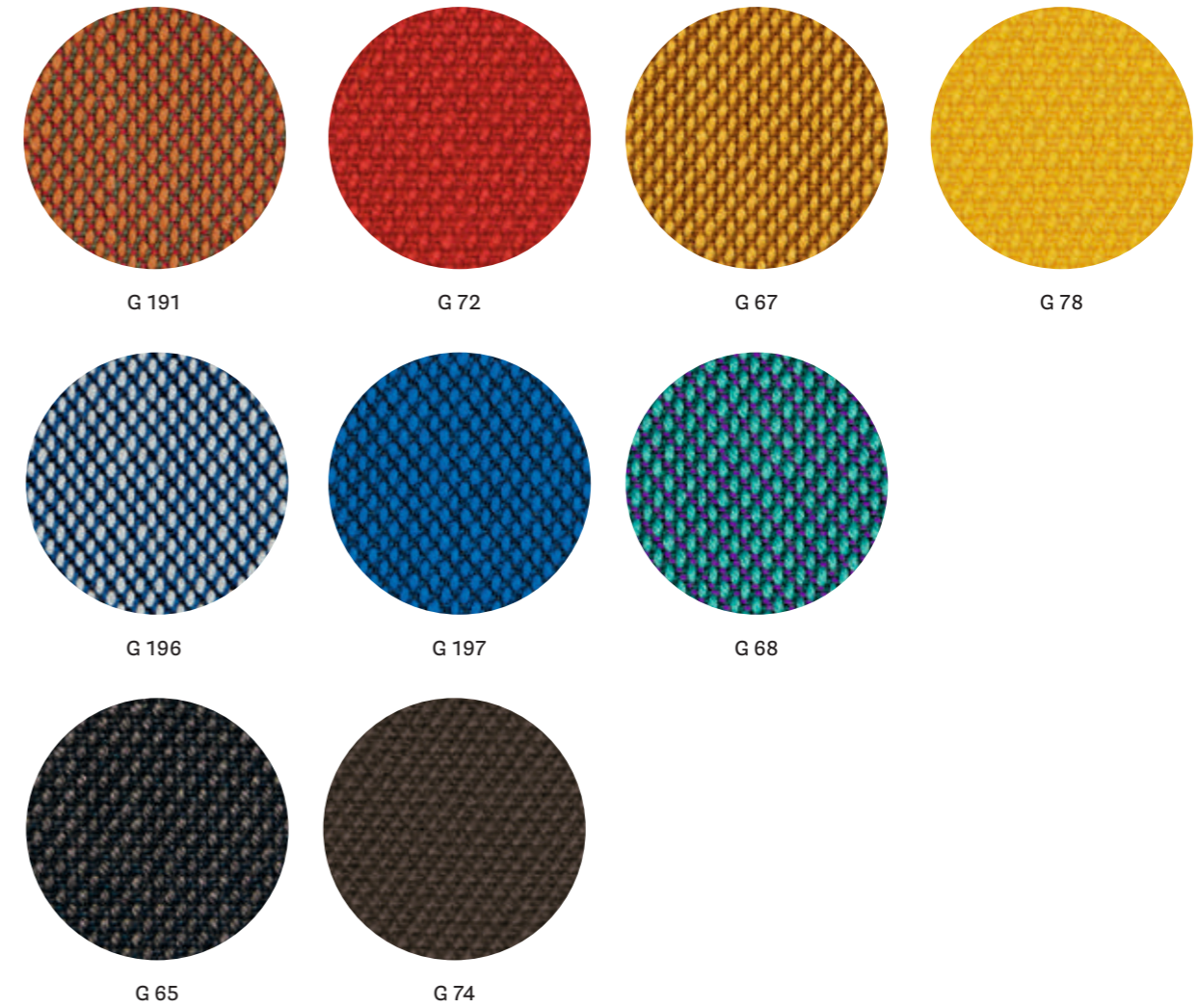
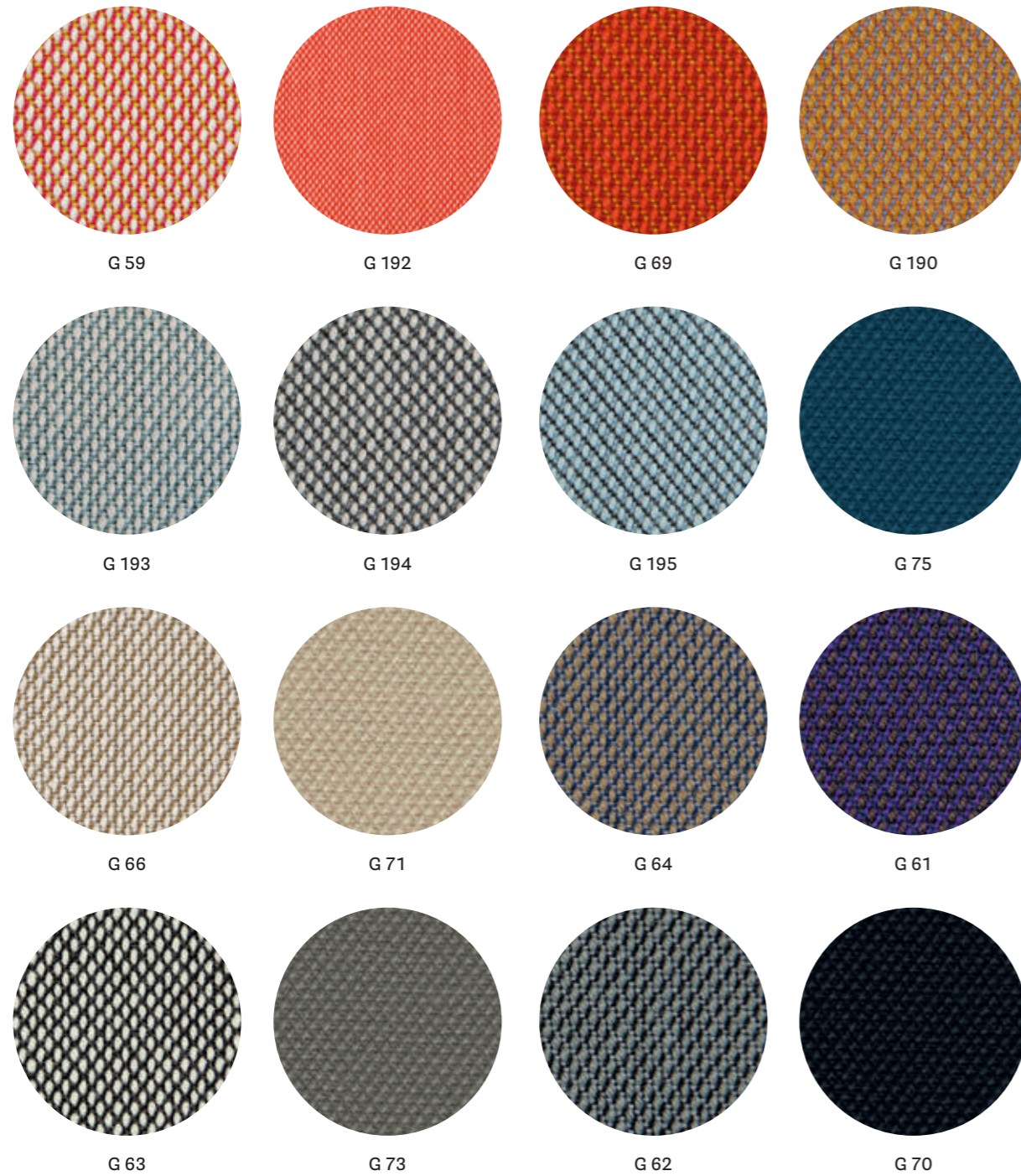
- COLLECTION / COLLEZIONE
kvadrat - RE-WOOL
DESIGNER Margrethe Odgaard
- COMPOSITION / COMPOSIZIONE
45% Recycled wool
45% New wool
10% Nylon
- ABRASION / ABRASIONE
50.000 cycles, Martindale (DS/EN ISO 12947-2:2016)

- RUBBING FASTNESS / SOLIDITÀ ALLO SFREGAMENTO
Dry and Wet 4-5, scale 1-5 (ISO 105-X12)
- PILLING
4, scale 1-5 (EN ISO 12945)
- LIGHT FASTNESS / SOLIDITÀ ALLA LUCE
5-7, scale 1-8 (ISO 105-B02:2014)
- SOUND ABSORPTION / ASSORBIMENTO ACUSTICO
folded: $\alpha_w = 0.75$ Class C (ISO 11654)

- FLAME RESISTANCE / RESISTENZA AL FUOCO
AS/NZS 1530.3
AS/NZS 3837 Class 2
BS 5852 Part 1
BS 5852 Crib 5 with treatment
BS 5852 IGNITION SOURCE 3
EN 1021 - 1/2
IMO FTP Code 2010: Part 8
NF D60-013
ÖNORM B1/Q1
UNI 9175 Classe 1IM
US CA TB 117-2013

- APPROVED / OMOLOGATO





technical specifications / specifiche tecniche



• COLLECTION / COLLEZIONE

kvadrat

G59+G69; G190+G197: STEELCUT TRIO
G70+G78: STEELCUT
DESIGNERS Dijkmeijer & Ridolfo

• COMPOSITION / COMPOSIZIONE

90% New wool
10% Nylon

• ABRASION / ABRASIONE

100.000 cycles; for G70+G78: 80.000 cycles
Martindale (DS/EN ISO 12947-2:2016)

• PILLING

4, scale 1-5; for G70+G78: 3-4, scale 1-5
(EN ISO 12945)

• LIGHT FASTNESS / SOLIDITÀ ALLA LUCE

5-7, scale 1-8 (EN ISO 105-B02)

• SOUND ABSORPTION / ASSORBIMENTO ACUSTICO

folded: $\alpha_w = 0.95$ Class A
for G70+G78: folded: $\alpha_w = 0.80$ Class B
(ISO 11654)

• FLAME RESISTANCE / RESISTENZA AL FUOCO

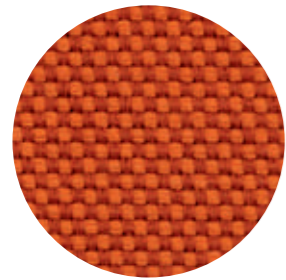
AS/NZS 1530.3
AS/NZS 3837 Class 2
BS 5852 Part 1
BS 5852 Crib 5 with treatment
BS 5852 IGNITION SOURCE 3
EN 1021 - 1/2
GB 50222 B1 with treatment
IMO FTP Code 2010: Part 8

NF D60-013
NFPA 260
ÖNORM B1/Q1
SN 198 898 5.3 with treatment
UNI 9175 Classe 1 IM
US CA TB 117-2013

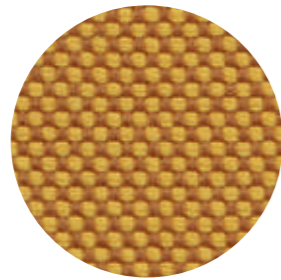
• APPROVED / OMOLOGATO



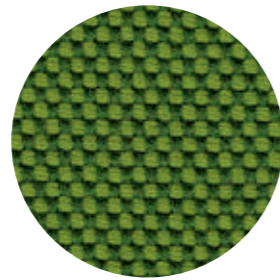
PRODUCT CERTIFIED
FOR LOW CHEMICAL
EMISSIONS:
UL COMF03
UL 2818
170166-420



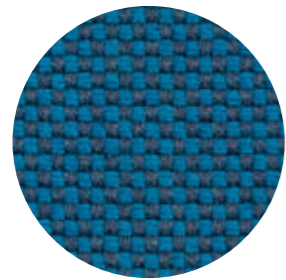
G 170



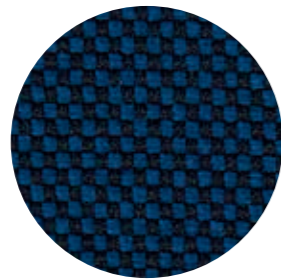
G 171



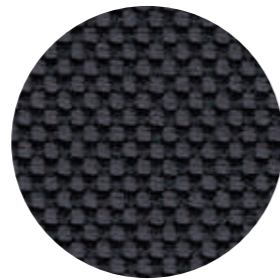
G 172



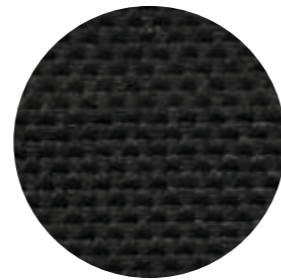
G 173



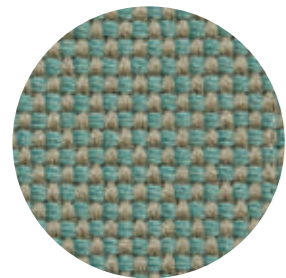
G 174



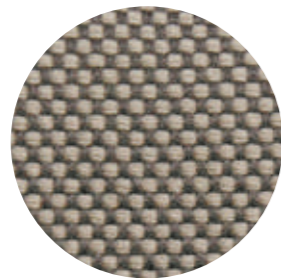
G 175



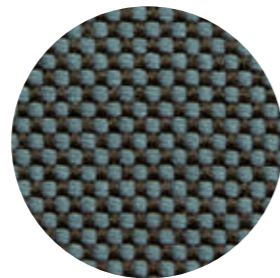
G 176



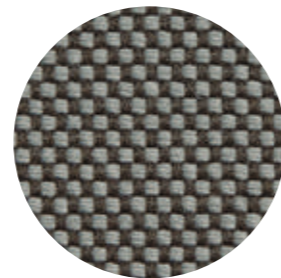
G 210



G 211



G 212



G 213

technical specifications / specifiche tecniche

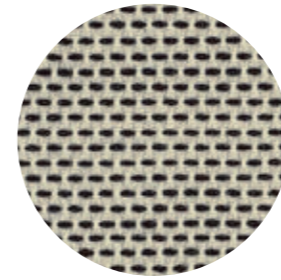


- COMPOSITION / COMPOSIZIONE
96% Virgin Wool
4% Polyamide
- ABRASION / ABRASIONE
90.000 cycles, Martindale
(DIN EN ISO 12947-2)

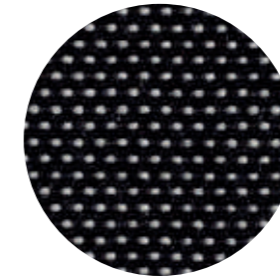
- PILLING
4-5, scale 1-5 (EN ISO 12945-2)
- LIGHT FASTNESS / SOLIDITÀ ALLA LUCE
5-8, scale 1-8 (EN ISO 105-B02)
- SOUND ABSORPTION / ASSORBIMENTO ACUSTICO
folded: $\alpha_w=0.95$ Class A (ISO 11654)

- FLAME RESISTANCE / RESISTENZA AL FUOCO
BS 5852:1979 (Part 1)
BS 5852:2006 (Part 2) Crib 5
DIN 4102-1 B2
EN 13501-1
EN 1021 -1 and -2
FAR 25.853 (12 sec. vertical)
IMO: 2014/90/EU (MED)
US CA TB 117-2013

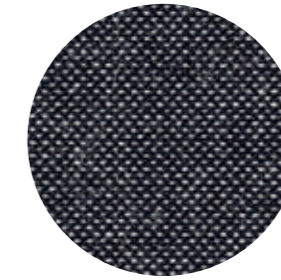
- APPROVED / OMOLOGATO



G 101



G 100



G 102

technical specifications / specifiche tecniche



- COLLECTION / COLLEZIONE
kvadrat - BASEL
DESIGNERS Herzog & de Meuron
- COMPOSITION / COMPOSIZIONE
90% New wool
10% Nylon
- ABRASION / ABRASIONE
50.000 cycles,
Martindale (EN ISO 12947-2:1998)

- PILLING
4, scale 1-5 (EN ISO 12945)
- LIGHT FASTNESS / SOLIDITÀ ALLA LUCE
6-7, scale 1-8 (ISO 105-B02)
- FLAME RESISTANCE / RESISTENZA AL FUOCO
AS/NZS 3837 Class 2
BS 5852 Part 1
BS 5852 Crib 5 with treatment

- EN 1021 - 1/2
GB 50222 B1 with treatment
IMO FTP Code 2010: Part 8
NFPA 260
NF D60-013
ÖNORM B1/Q1
SN 198 898 5.3 with treatment
UNI 9175 Classe 1 IM
US CA TB 117-2013

- APPROVED / OMOLOGATO



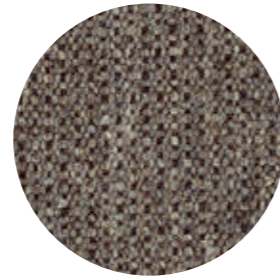
CATEGORY G / CATEGORIA G



G 120



G 121



G 122

technical specifications / specifiche tecniche



- COLLECTION / COLLEZIONE
kvadrat - MOLLY
DESIGNER Åsa Pärson
- COMPOSITION / COMPOSIZIONE
100% New wool
- ABRASION / ABRASIONE
75-100.000 cycles,
Martindale (EN ISO 12947-2:1998)

- PILLING
3-4, scale 1-5 (EN ISO 12945)
- LIGHT FASTNESS / SOLIDITÀ ALLA LUCE
6-7, scale 1-8 (ISO 105-B02)
- FLAME RESISTANCE / RESISTENZA AL FUOCO
BS 5852 Part 1
BS 5852 Crib 5 with treatment
EN 1021 - 1/2

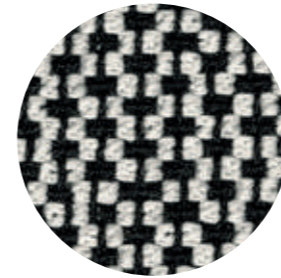
IMO FTP Code 2010: Part 8
NFPA 260
NF D60-013
ÖNORM B1/Q1
UNI 9175 Classe 1IM
US CA TB 117-2013

• APPROVED / OMOLOGATO

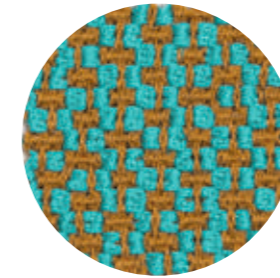


PRODUCT CERTIFIED
FOR LOW CHEMICAL
EMISSIONS:
UL COM/CGG
UL 2818
170166-420

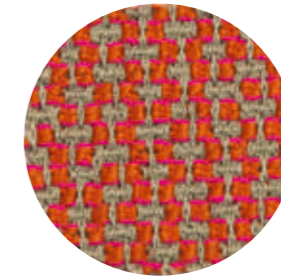
CATEGORY G / CATEGORIA G



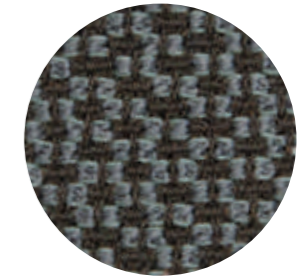
G 130



G 131



G 132



G 133

technical specifications / specifiche tecniche



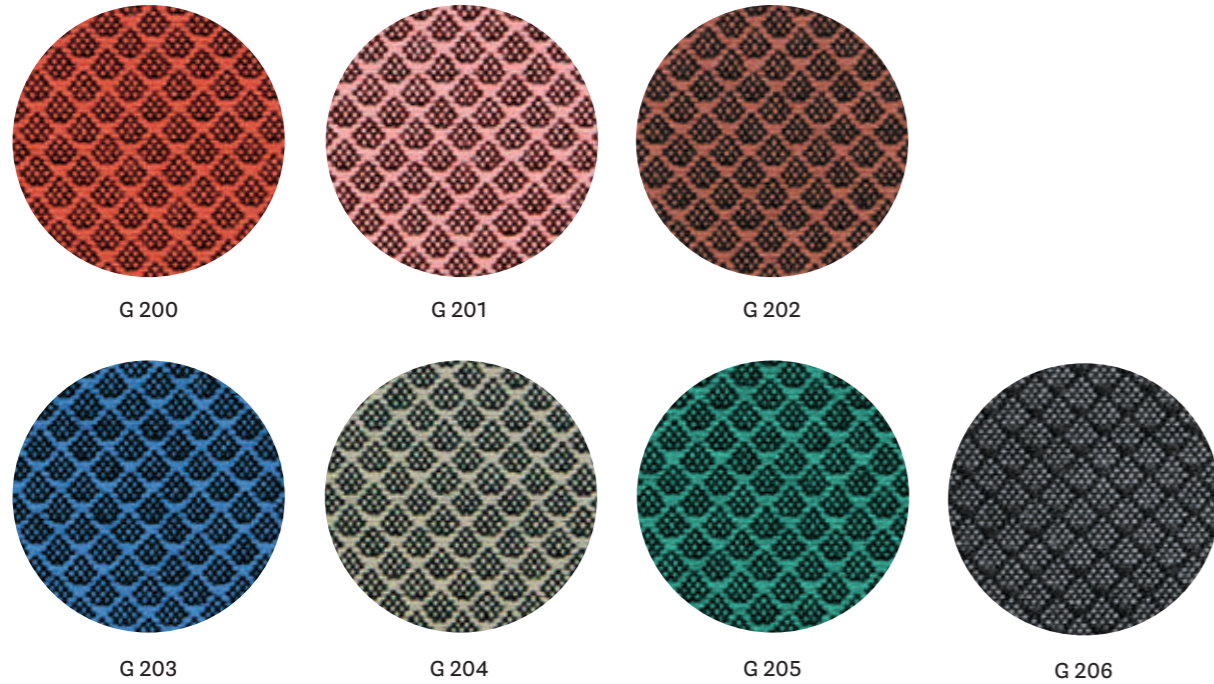
- COMPOSITION / COMPOSIZIONE
95% Virgin Wool
5% Polyamide
- ABRASION / ABRASIONE
52.000 cycles, Martindale
(DIN EN ISO 12947-2)
- PILLING
4-5, scale 1-5 (EN ISO 12945-2)

- LIGHT FASTNESS / SOLIDITÀ ALLA LUCE
5-8, scale 1-8 (EN ISO 105-B02)
- SOUND ABSORPTION / ASSORBIMENTO ACUSTICO
folded: $\alpha_w = 0.85$ Class B (ISO 11654)
- FLAME RESISTANCE / RESISTENZA AL FUOCO
BS 5852:1979 (Part 1)
BS 5852:2006 (Part 2) Crib 5
DIN 4102-1 B2

EN 1021 -1 and -2
EN 13501-1
FAR 25.853 (12 sec. vertical)
IMO: 2014/90/EU (MED)
UNI 9175 Classe 1 IM
US CA TB 117-2013

• APPROVED / OMOLOGATO





G 200

G 201

G 202

G 203

G 204

G 205

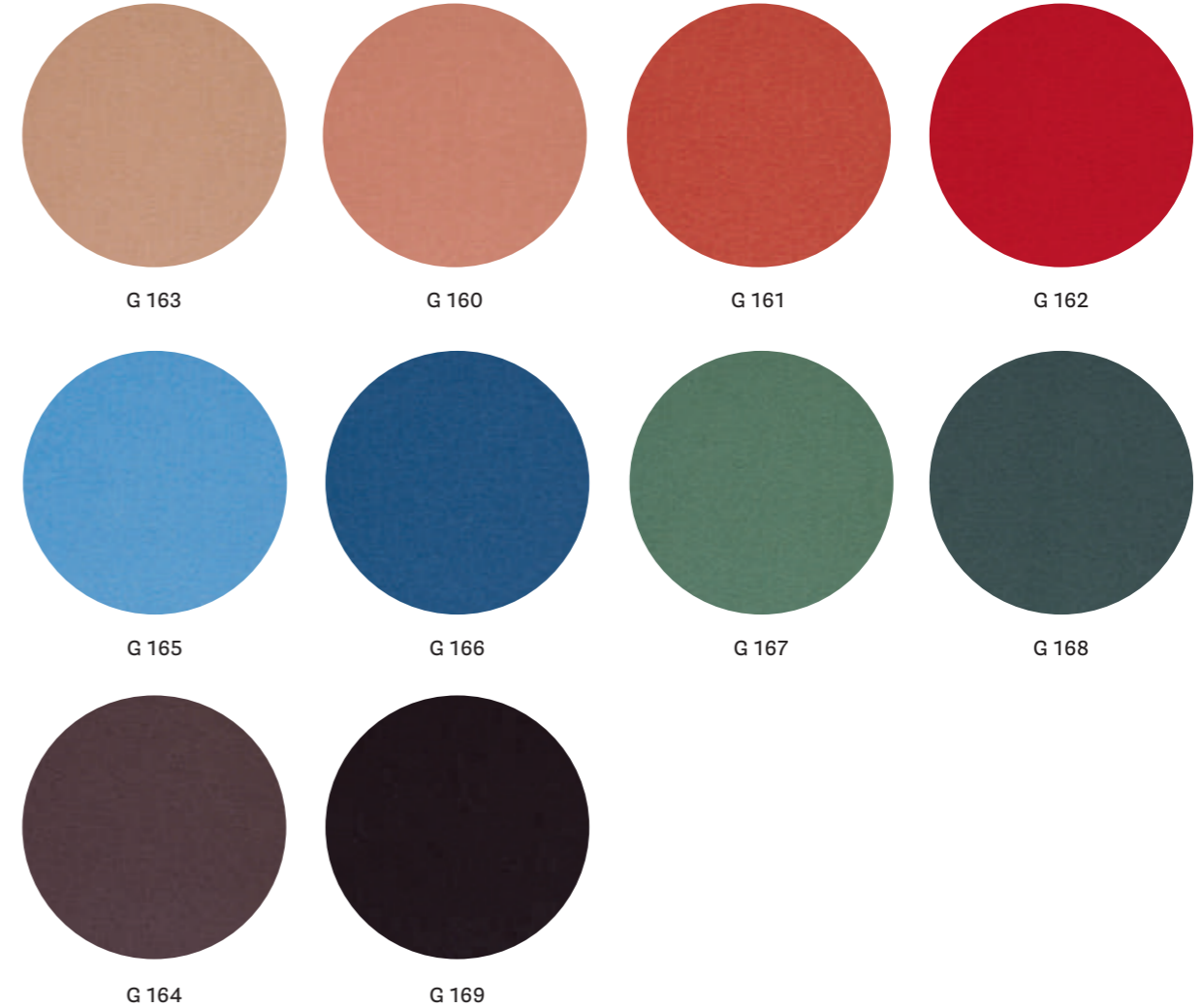
G 206

technical specifications / specifiche tecniche



- COLLECTION / COLLEZIONE
kvadrat - JAALI
DESIGNER Doshi Levien
- COMPOSITION / COMPOSIZIONE
92% New wool
8% Nylon
- ABRASION / ABRASIONE
80.000 cycles, Martindale
(EN ISO 12947)
- RUBBING FASTNESS / SOLIDITÀ ALLO SFREGAMENTO
Dry 4-5 and Wet 3-5, scale 1-5
(EN ISO 105-X12)
- PILLING
4, scale 1-5 (EN ISO 12945)
- LIGHT FASTNESS / SOLIDITÀ ALLA LUCE
6-7, scale 1-8 (EN ISO 105-B02)
- FLAME RESISTANCE / RESISTENZA AL FUOCO
AS/NZS 1530.3
BS 5852 Part 1
BS 5852 Crib 5 with treatment
BS 5852 ignition source 3
EN 1021-1/2
IMO FTP Code 2010: Part 8
NF D60-013
SN 198 898 5.3 with treatment
UNI 9175 Classe 1IM
US CA TB 117-2013

• APPROVED / OMOLOGATO



G 163

G 160

G 161

G 162

G 165

G 166

G 167

G 168

G 164

G 169

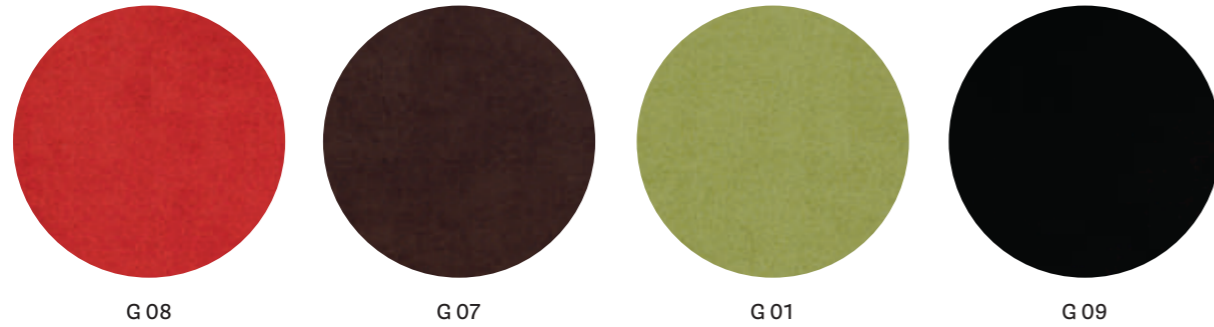
technical specifications / specifiche tecniche



- COLLECTION / COLLEZIONE
kvadrat - HERO
DESIGNER Patricia Urquiola
- COMPOSITION / COMPOSIZIONE
96% New wool
4% Nylon
- ABRASION / ABRASIONE
45.000 cycles, Martindale
(EN ISO 12947)
- PILLING
3-4, scale 1-5 (EN ISO 12945)
- LIGHT FASTNESS / SOLIDITÀ ALLA LUCE
5-7, scale 1-8 (ISO 105-B02)
- SOUND ABSORPTION / ASSORBIMENTO ACUSTICO
folded: $\alpha_w = 0.75$ Class C (ISO 11654)
- FLAME RESISTANCE / RESISTENZA AL FUOCO
AS/NZS 3837 Class 2
BS 5852 Crib 5 with treatment
BS 5852 Part 1
EN 1021 - 1/2
IMO FTP Code 2010: Part 8
IMO FTP Code 2010: Part 7 with treatment
- APPROVED / OMOLOGATO
NF D60-013
SN 198 898 5.3 with treatment
UNI 9175 Classe 1 IM
US CA TB 117-2013



CATEGORY G / CATEGORIA G

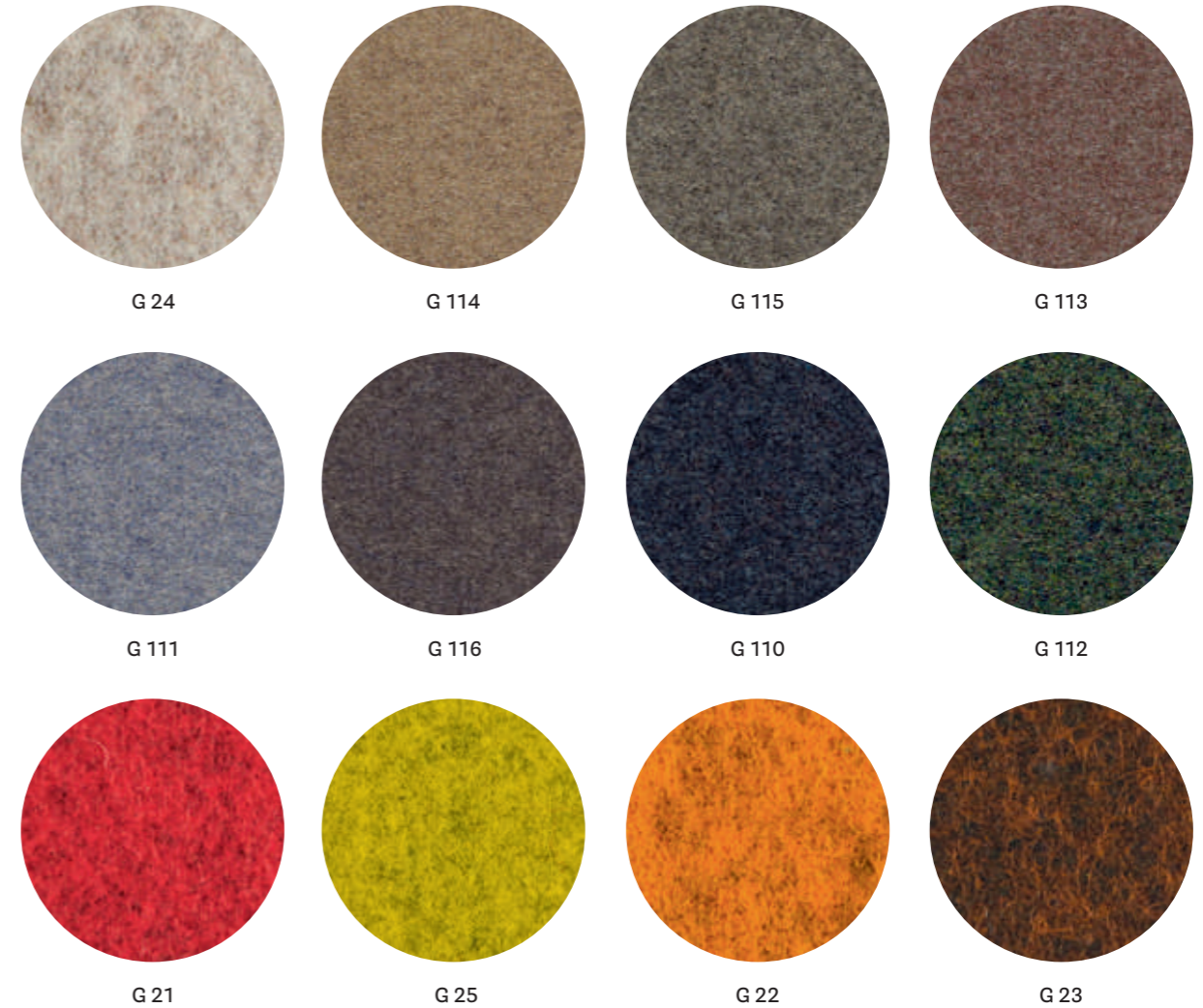


technical specifications / specifiche tecniche



- COMPOSITION / COMPOSIZIONE
88% Polyester
12% Polyurethane incl. antistatic fibers and fire retardant fibers in the backside
- ABRASION / ABRASIONE
150.000 cycles, Martindale (EN ISO 12947)
- PILLING
5, scale 1-5 (EN ISO 12945)
- LIGHT FASTNESS / SOLIDITÀ ALLA LUCE
5-6, scale 1-8 (ISO 105-B02)
- RUBBING FASTNESS / SOLIDITÀ ALLO SFREGAMENTO
Dry and Wet 4/4, scale 1-5 (EN ISO 105-X12)
- FLAME RESISTANCE / RESISTENZA AL FUOCO
BS EN 1021 1&2 Cigarette and Match
BS EN 1021-1 Cigarette
ÖNORM A3800-B2-B3825-Q1 UK
NF P 92-503 M3
US CA TB 117-2013

CATEGORY G / CATEGORIA G



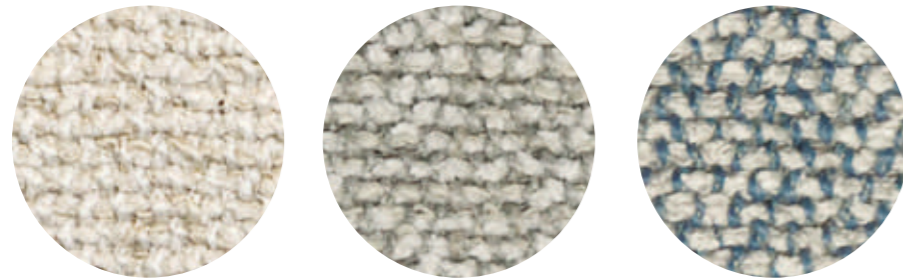
technical specifications / specifiche tecniche



- COLLECTION / COLLEZIONE
kvadrat
G110÷G116: DIVINA MD
G21÷G25: DIVINA MELANGE
DESIGNER Finn Skødt
- COMPOSITION / COMPOSIZIONE
100% New Wool
- ABRASION / ABRASIONE
45.000 cycles, Martindale (EN ISO 12947)
- PILLING
3, scale 1-5 (EN ISO 12945)
- LIGHT FASTNESS / SOLIDITÀ ALLA LUCE
5-7, scale 1-8 (ISO 105-B02)
- SOUND ABSORPTION / ASSORBIMENTO ACUSTICO
folded: $\alpha_w = 0.70$ Class C (ISO 11654)
- FLAME RESISTANCE / RESISTENZA AL FUOCO
AS/NZS 1530.3
BS 5852 Crib 5
BS 5852 Part 1
BS 5867 part 2 type B
EN 1021-1/2
EN 13501, C-s1, d0, glued
GB 50222 B1 with treatment
IMO FTP Code 2010: Part 8
- APPROVED / OMOLOGATO
NF D60-013
NFPA 260
ÖNORM B1/ Q1
SN 198 898 5.3 with treatment
UNI 9175 Classe 1 IM
US CA TB 117-2013



CATEGORY G / CATEGORIA G



G 225

G 220

G 221



G 222

G 223

G 224

technical specifications / specifiche tecniche



• COLLECTION / COLLEZIONE
kvadrat - SAHCO
MOSS
DESIGNER Vincent Van Duysen

• COMPOSITION / COMPOSIZIONE
52% Cotton
22% Viscose
14% Polyacrylic
6% Linen
3% Nylon
3% Polyester

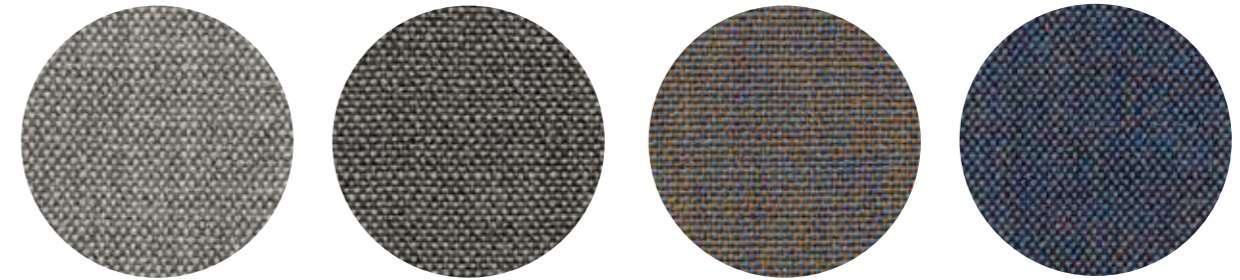
• ABRASION / ABRASIONE
50.000 cycles, Martindale
(EN ISO 12947)

• PILLING
4-5, scale 1-5 (EN ISO 12945)

• LIGHT FASTNESS / SOLIDITÀ ALLA LUCE
5-7, scale 1-8 (ISO 105-B02)

• FLAME RESISTANCE / RESISTENZA AL FUOCO
BS 5852 crib 5 with treatment
BS 5852 part 1
EN 1021-1/2

CATEGORY H / CATEGORIA H

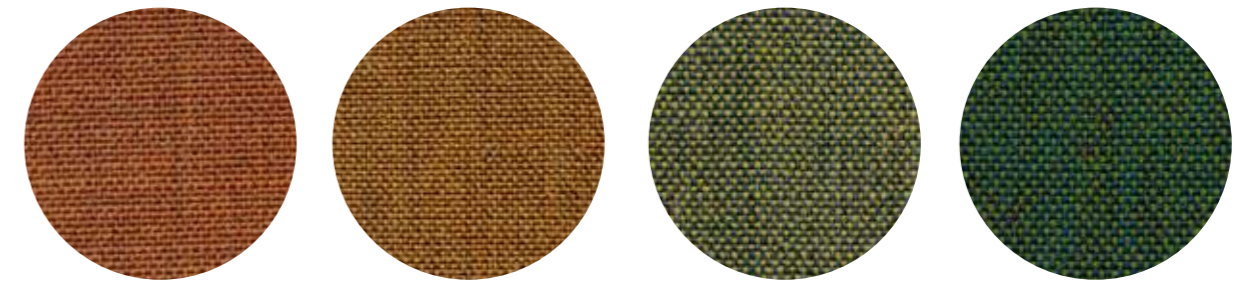


H 120

H 121

H 122

H 123



H 124

H 125

H 126

H 127

technical specifications / specifiche tecniche



• COLLECTION / COLLEZIONE
kvadrat
REMIX 3
DESIGNER Giulio Ridolfo

• COMPOSITION / COMPOSIZIONE
90% New Wool
10% Nylon

• ABRASION / ABRASIONE
100.000 cycles, Martindale
(EN ISO 12947)

• RUBBING FASTNESS / SOLIDITÀ ALLO SFREGAMENTO
Dry 4-5 and Wet 3-5, scale 1-5

(EN ISO 105-X12)

• PILLING
4, scale 1-5 (EN ISO 12945)

• LIGHT FASTNESS / SOLIDITÀ ALLA LUCE
5-7, scale 1-8 (EN ISO 105-B02)

• SOUND ABSORPTION / ASSORBIMENTO ACUSTICO
folded: $\alpha_w = 0.80$ Class B (EN ISO 354)

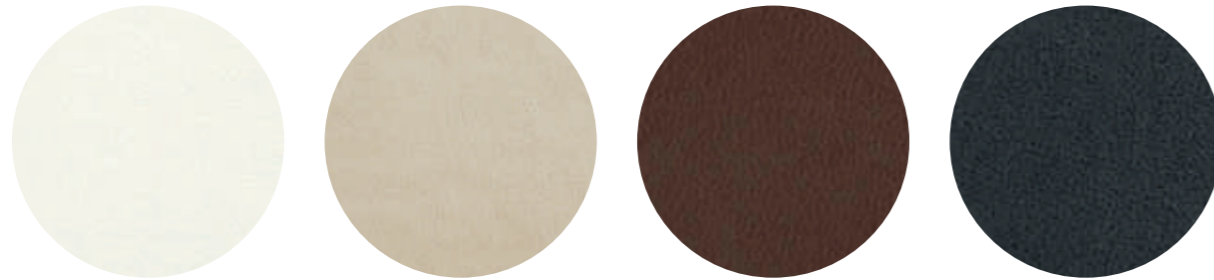
• FLAME RESISTANCE / RESISTENZA AL FUOCO
AS/NZS 1530.3
AS/NZS 3837 Class 2
ASTM E84 class A
BS 5852 Crib 5 with treatment

BS 5852 IGNITION SOURCE 3
BS 5852 Part 1
EN 1021 - 1/2
GB 50222 B1 with treatment
IMO FTP Code 2010: Part 7
with treatment
IMO FTP Code 2010: Part 8
NF D60-013
NFPA 260
ÖNORM B1/Q1
SN 198 898 5.3 with treatment
UNI 9175 Classe 1 IM
US Cal. Bull. 117-2013

• APPROVED / OMOLOGATO



CATEGORY C / CATEGORIA C

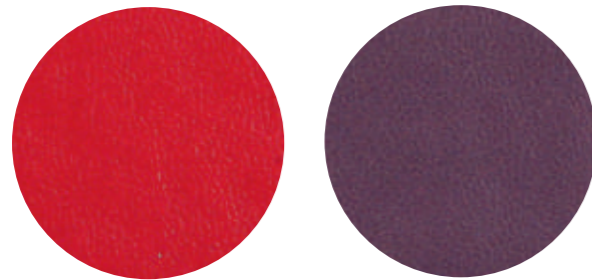


C 90

C 94

C 95

C 93



C 92

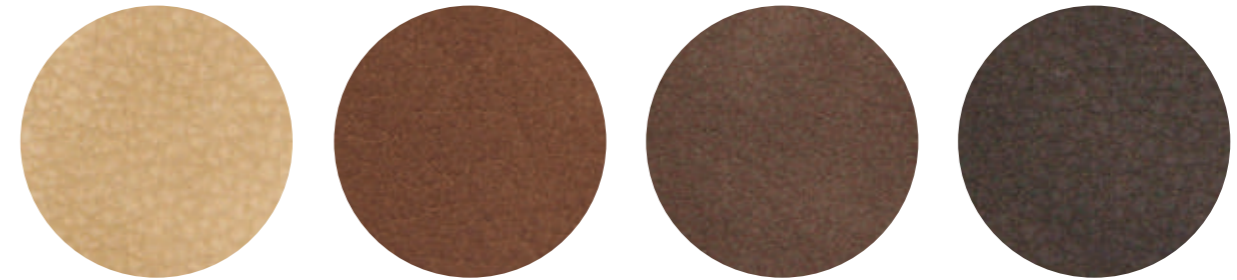
C 91

technical specifications / specifiche tecniche



- **COMPOSITION / COMPOSIZIONE**
72% PVC
25% Cotton
3% Polyurethane
- **ABRASION / ABRASIONE**
50.000 cycles, Martindale
(EN ISO 5470-2)
- **RUBBING FASTNESS / SOLIDITÀ ALLO SFREGAMENTO**
Dry and Wet 4-5, scale 1-5
(UNI EN ISO 105-X12)
- **LIGHT FASTNESS / SOLIDITÀ ALLA LUCE**
6, scale 1-8 (UNI EN ISO 105-B02)
- **FLAME RESISTANCE / RESISTENZA AL FUOCO**
BS 5852-1 Part 1
EN 1021-2
IMO RESOLUTION A.652 (16): 1989
UNI 9175 Classe 1 IM
US CA TB 117-2013

CATEGORY C / CATEGORIA C



C 45

C 46

C 47

C 48

technical specifications / specifiche tecniche



- **COMPOSITION / COMPOSIZIONE**
80% PVC
18% PES
2% Polyurethane
- **Simil-leather non-homogenous shade (vintage effect) / Finta pelle in tonalità non omogenea (effetto vintage)**
- **ABRASION / ABRASIONE**
50.000 cycles, Martindale
(EN ISO 5470-2)
- **RUBBING FASTNESS / SOLIDITÀ ALLO SFREGAMENTO**
Dry and Wet 4-5, scale 1-5
(UNI EN ISO 105-X12)
- **FLAME RESISTANCE / RESISTENZA AL FUOCO**
BS 5852 Part 1 0,1
EN 1021-1&2
UNI 9175 Classe 1 IM



C 139

C 140

C 141

C 134

C 130

C 131

C 132

C 133

C 135

C 136

C 137

C 138

technical specifications / specifiche tecniche



- **COMPOSITION / COMPOSIZIONE**
76% PVC
22% PES
2% Polyurethane
- **ABRASION / ABRASIONE**
60.000 cycles, Martindale
(ISO 5470-2)
- **RUBBING FASTNESS / SOLIDITÀ ALLO SFREGAMENTO**
Dry and Wet 4-5, scale 1-5
(ISO 105-X12)
- **LIGHT FASTNESS / SOLIDITÀ ALLA LUCE**
6, scale 1-8 (ISO 105-B02)
- **FLAME RESISTANCE / RESISTENZA AL FUOCO**
BS 5852-1 match test
EN 1021 Part 1-2
UNI 9175 Classe 1 IM
US CA TB 117-2013



C 14

C 21

C 15

C 17

C 13

C 12

C 20

C 11

C 18

C 22

C 10

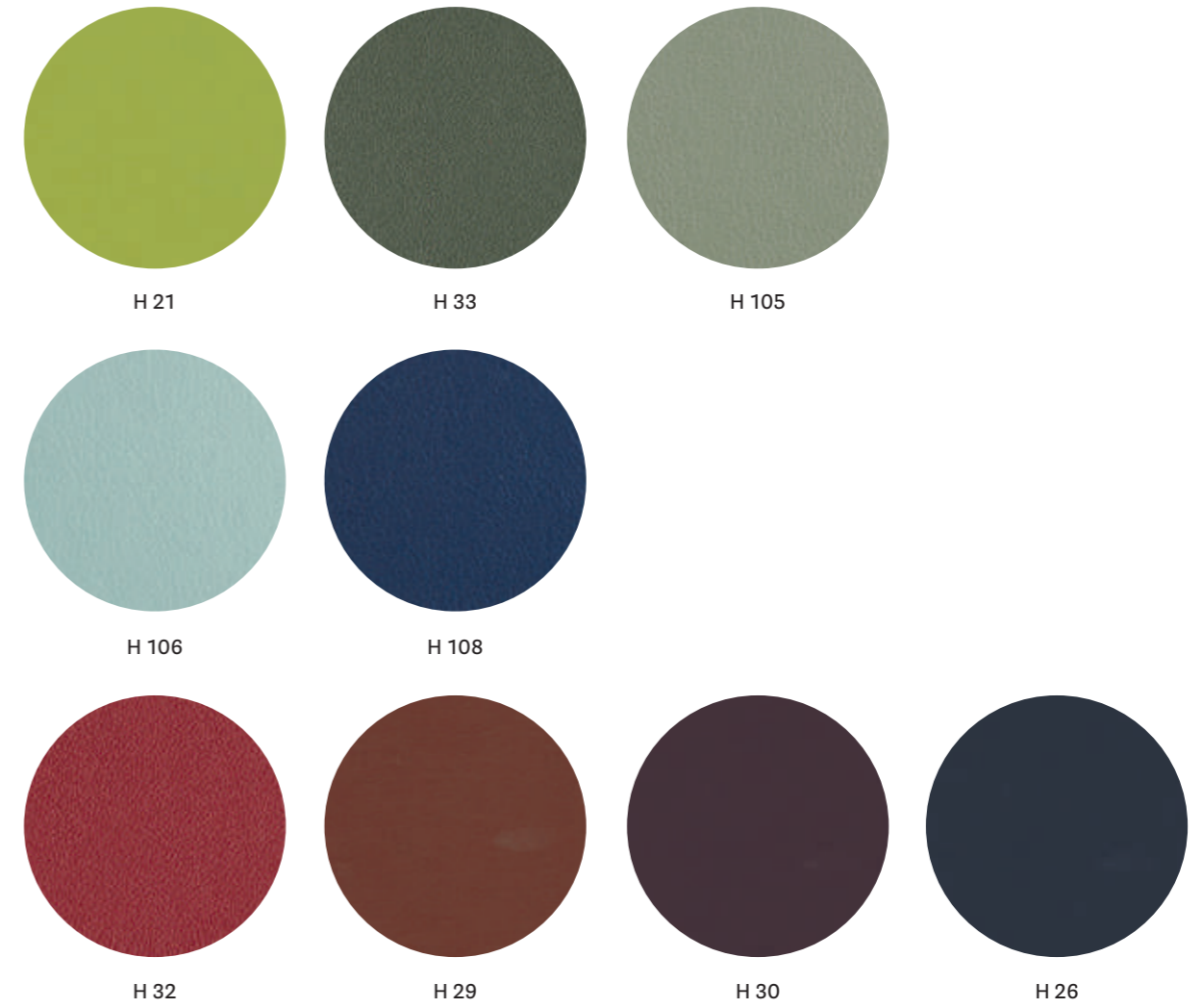
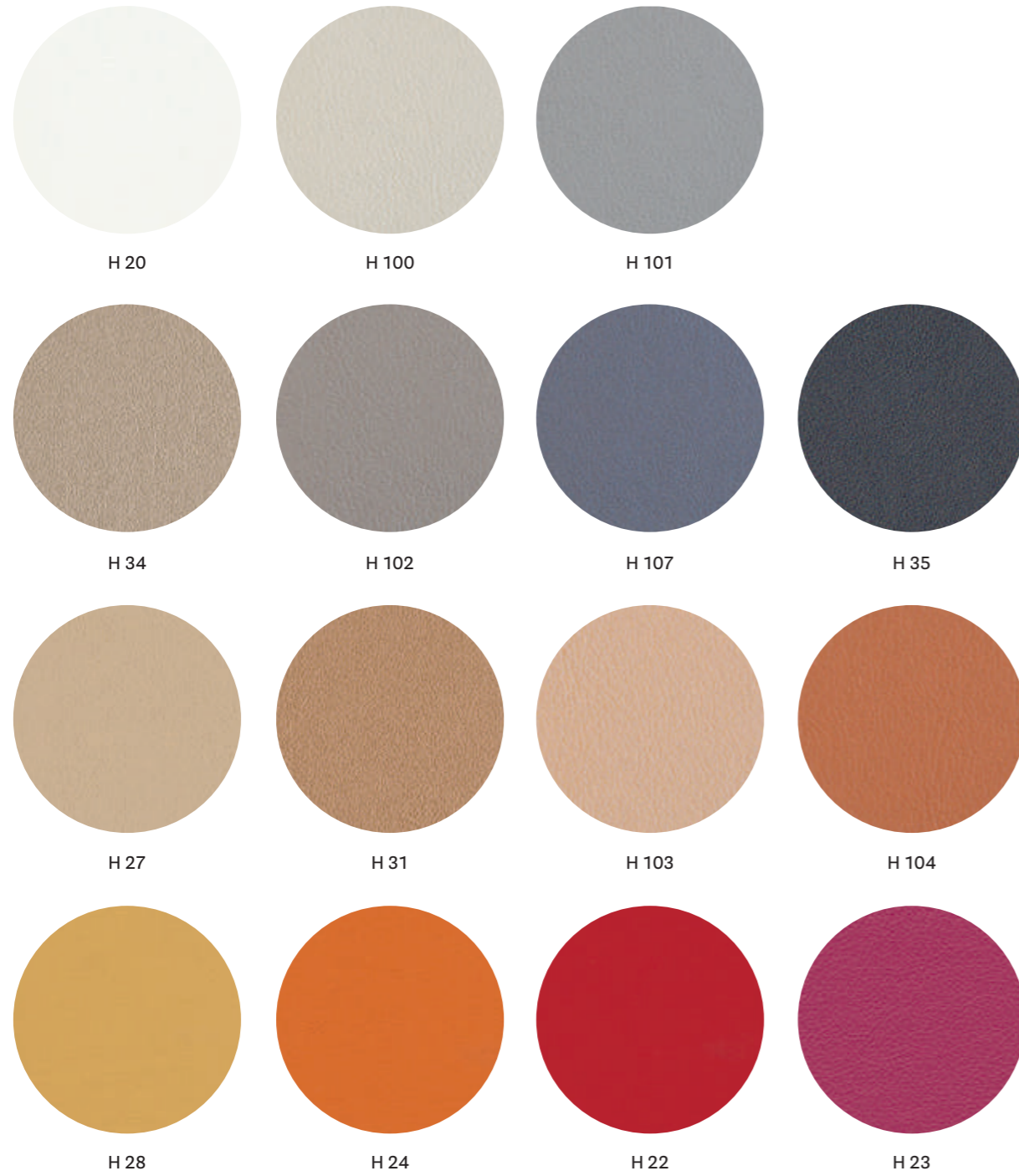
technical specifications / specifiche tecniche



- **COMPOSITION / COMPOSIZIONE**
85% PVC
15% Cotton
- **ABRASION / ABRASIONE**
150.000 cycles, Martindale
(ISO 5470-2)
- **LIGHT FASTNESS / SOLIDITÀ ALLA LUCE**
≥6, scale 1-8 (EN ISO 105-B02)
- **FLAME RESISTANCE / RESISTENZA AL FUOCO**
B2 (DIN 4102)
BS 5852 Crib 5
EN 1021.1-2
EN 13501-1 - Cs3do
FAR 25853 App F Part 1
- **IMO RESOLUTION A.652**
NF D60-013 - AM 18
NFP 92503 M1
NY/NJ - Port Authority
UFAC Fabric Class 1
German fire standard B1 (except C12 and C22)
US CATB 117
US CATB 133

- **APPROVED / OMOLOGATO**





technical specifications / specifiche tecniche



- COMPOSITION / COMPOSIZIONE
63% Polyurethane
29% Cotton
8% PES
- ABRASION / ABRASIONE
150.000 cycles, Martindale
(UNI EN ISO 12947-2)

- LIGHT FASTNESS / SOLIDITÀ ALLA LUCE
5-6, scale 1-8 (UNI EN ISO 105-B02)
- FLAME RESISTANCE / RESISTENZA AL FUOCO
BS 5852 Crib 5
BS 5852 Part 1-2
EN 1021 Part 1-2
IMO resolution FTP Code 2010

IMO resolution A.652 (16):1989
UNI 9175 Classe 1 IM
US CA TB 117-2013